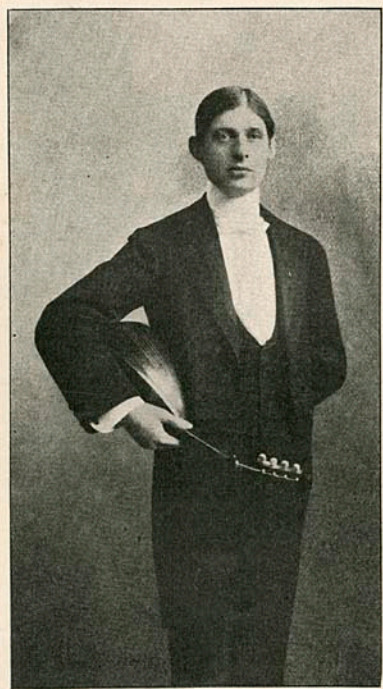


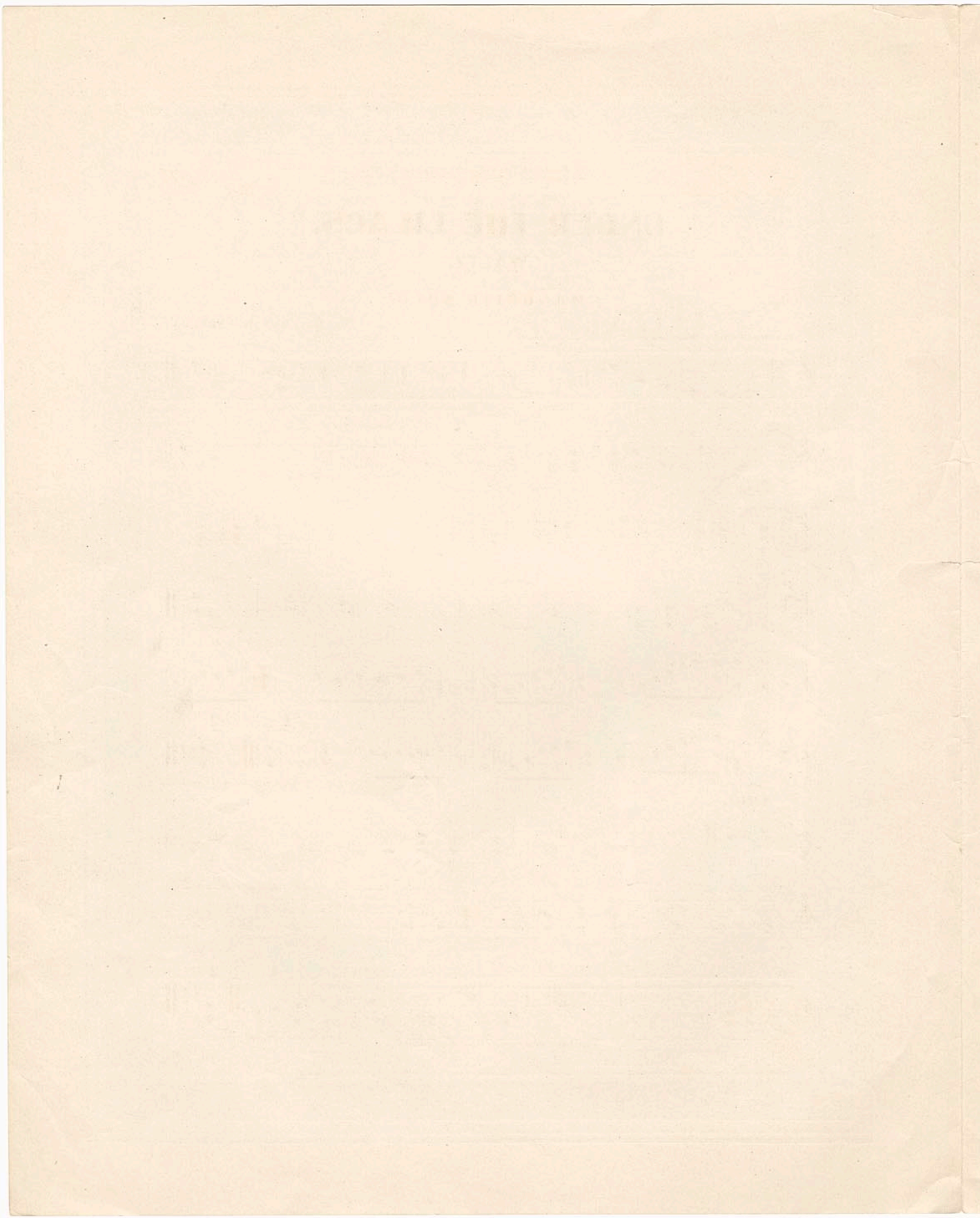
Compliments of the Composer

SELECTED
MANDOLIN SOLOS
IN THE DUO STYLE
BY CHARLES BRUNOVER.



ALICE, WHERE ART THOU.....	.40
Duo for One Mandolin	
CUBAN ROSE WALTZ.....	.40
Full Harmony	
A REMEMBRANCE40
Duo for One Mandolin	
EVENING SONG.....	.40
Duo for One Mandolin	
ANDANTE CAPRICE.....	.30
Full Harmony	
GAVOTTE LORAIN.....	.40
Full Harmony Duo Style	
MARCH MARBELLE.....	.30
Full Harmony Duo Style	
DANCING WAVES, CONCERT WALTZ..	.50
Full Harmony Duo Style	
BAY VIEW MARCH.....	.40
Full Harmony Duo Style	
UNDER THE LILACS WALTZ.....	.40
Full Harmony Duo Style	
A REVERIE.....	.30
Full Harmony	
ECHOES FROM THE PINES.....	.40
Full Harmony Duo Style	

PUBLISHED BY
THE GEORGE W. THOMS MUSIC CO.
615-617 ONEIDA ST. APPLETON, WIS.



To my friend ARTHUR LAABS, Waupaca, Wis.

UNDER THE LILACS.

WALTZ.

MANDOLIN SOLO.

By CHAS. BRUNOVER.

INTRODUCTION.—Waltz tempo.

The introduction consists of six staves of music. The first staff begins with a treble clef, a key signature of one sharp (F#), and a 3/4 time signature. It features a melody starting on a quarter rest, followed by eighth notes, and then a series of chords. Dynamics include *p* (piano) and *rall.* (rallentando). The second staff continues the melody with similar rhythmic patterns. The third staff shows a more complex chordal accompaniment. The fourth staff concludes the introduction with a *Fine.* marking. The fifth and sixth staves provide a more detailed view of the accompaniment, with the sixth staff ending with first and second endings marked with '1' and '2'.

TRIO.

The trio section consists of three staves of music. The first staff begins with a treble clef, a key signature of one sharp (F#), and a 3/4 time signature. It features a melody starting on a quarter rest, followed by eighth notes, and then a series of chords. Dynamics include *p* (piano) and *f* (forte). The second staff continues the melody with similar rhythmic patterns. The third staff shows a more complex chordal accompaniment. The section concludes with first and second endings marked with '1' and '2'.

Copyright MCMIV, by CHAS. BRUNOVER.

FRED'X POLLWORTH & SONS, MUSIC TYPE'RS, MILWAUKEE.

